



Introducing the smallest & quietest, 4.5 kW gasoline generator available anywhere!

First in a new category of small, 1800 rpm gasoline generators

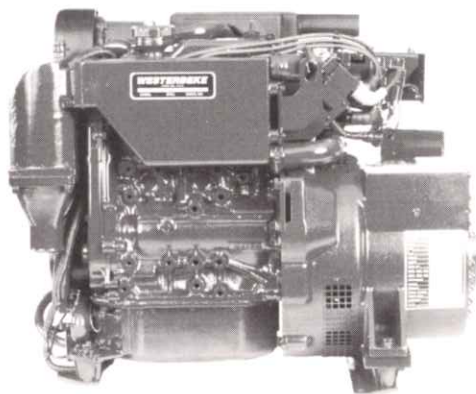
The new 4.5 BCGB is a smooth running, three-cylinder power plant that has leaped ahead of the competition. As a matter of fact, it is quieter than other 3600 rpm generators and there is no 1800 rpm gasoline generator in its size and power rating.

The 4.5 BCGB's industrial engine is tuned and balanced to minimize both noise and vibration, and is designed to run reliably for thousands of hours. The unit is mounted on soft flexible isolator mounts that also help prevent the transfer of vibration into the hull.

The 4.5 BCGB offers true, single-side servicing. There is no servicing point on the port side of the engine that can be buried and cause you inconvenience.

Westerbeke products are supported by a worldwide network of over 65 master distributors and their dealers providing parts, service and technical support around the world.

It is to your advantage to select a generator made by Westerbeke, the people who pioneered the truly "quiet breed" of generators. With over 60 years of marine experience, you can be sure Westerbeke will continue to bring quality and innovation to it's products.



4.5 BCGB Marine Gasoline Generator

Generator Dimensions

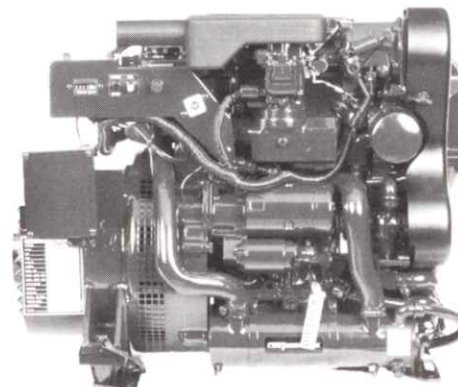
Length 27.4" (696.0 mm)

Width 15.8" (403.1 mm)

Height 21.5" (546.1 mm)

Dry Weight 307 lbs. (139.3 kg)

See reverse for more dimensional information.
Photographs may show optional equipment.



4.5 BCGB Marine Gasoline Generator

Standard Features

- Fresh water cooling
- Vibration mounts
- 90° water injected exhaust elbow
- Coolant recovery tank
- Battery charger
- Safety stop switch
- Drip tray
- Belt guard
- Belt-driven raw water pump
- Lube oil drain hose
- Safety shut-downs — hi-coolant temperature, low oil pressure, hi-exhaust temperature
- A.C. Circuit Breaker
- Operator's manual and parts list
- "CE" Mark
- CARB certified
- EPA certified
- Meets U.S.C.G. Regulation 33CFR-183



Optional Spare Parts Kit

Kit contents, as shown, may not correspond to the generator pictured.

Generator Design

DESIGN: Brushless, four pole, revolving field, power takeoff
VOLTAGE REGULATION: Standard +/- 5% no load to full load.
FREQUENCY REGULATION: 3 Hz (5%) no load to full load.
INSULATION: Class "F", as defined by NEMA MG1-1.66.

TEMPERATURE RISE: Within NEMA MG1-22.40 operating at full load.
COOLING: Cast centrifugal blower, direct connected.
ELECTROMAGNETIC INTERFERENCE LEVEL: Exceeds requirements for most marine radio-telephones and standard TV's

Model	Electrical Characteristics					Ratings			Engine	
	Volts	Amps	Hertz	Phase	Wire	Power Factor	KW	RPM	Start	
4.5 BCGB-614*	120	37.5	60	1	4	1.0	4.5	1800	Remote	
3.8 BCGB-514*	230	16.5	50	1	4	1.0	3.5	1500	Remote	

Specifications

Number of cylinders	3 Cylinder, vertical in-line
Type	4 cycle
Displacement	40.3 cu. in. (.66 liter)
Bore and stroke	2.56" x 2.61" (65.0mm x 66.3mm)
Compression ratio	9.8:1
Rated rpm	60 Hz – 1800 rpm 50 Hz – 1500 rpm
HP @ 1800 rpm	11.3 HP
Maximum angle of operation	Not to exceed 25° in all directions
Exhaust elbow conn.	2.0" OD (50.8mm)
Raw water conn.	0.75" OD (19.05mm)
Dry weight	307 lbs (139.3 kg)
Combustion system	Semi-spherical type
Aspiration	Naturally aspirated
Lubrication system	Forced pump
Cooling system	3.5 quarts (3.4 liter)
Full load fuel consumption	.63 GPH (2.4 LPH) (approx.)
Carburetor	Down draft type
Governor	Mechanical
Lube oil filter	Full flow, spin on element
Lubricant capacity	2.5 quarts (2.4 liters)
Fuel transfer pump	Electric type
Fuel supply piping	.25" ID (6.35mm)
Starting motor	12 volt, 1.2 kw
Battery charging	17 amps, integral electric type
Cold cranking amps	120 amps @ 70 degrees F
Electrical system	12 volts DC, negative ground

*Generator field adjustable to 50 or 60 Hertz.

Construction – Engine Components

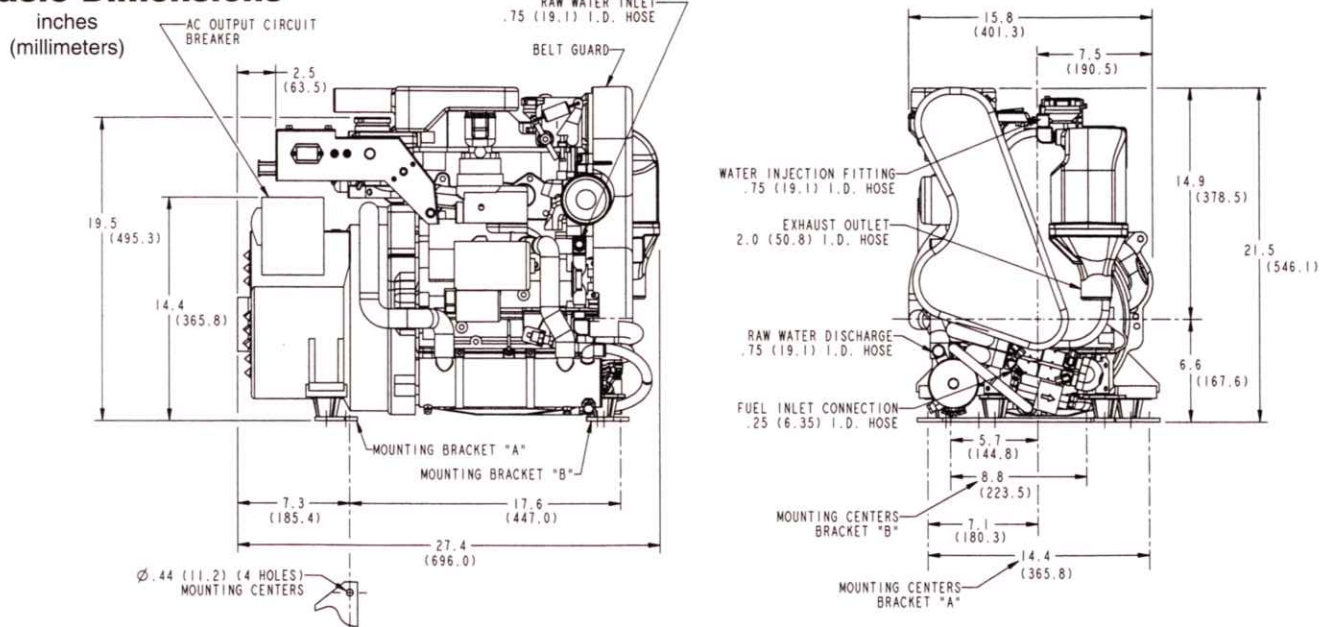
Cylinder head	Aluminum
Cylinder block	Cast Iron
Crankshaft	Forged crankshaft, four main bearings
Valves	Overhead, rotating type
Fuel System	Carbureted w/U.S.C.G. approved flame arrestor
Cooling system	Fresh water-cooled with heat exchanger
Exhaust manifold	Cast aluminum, fresh water-cooled

Optional Equipment

- Remote start-stop panel
- Ship-shore switch
- Hydro-hush muffler and fittings
- "A" on-board spare parts kits; "B" extended cruising spare parts kit
- Anti-siphon valve for overboard cooling water discharge
- Power takeoff adapter
- Technical Manual

Distributor/Dealer

Basic Dimensions



Drawings are for reference only and should not be used for installation. Detailed installation drawings are available upon request.